

REQUEST | project data

Specification of: DDM 12/12 E6G3702 1F 6P 1V +SCT == 6102N5

High performance centrifugal fan DDM

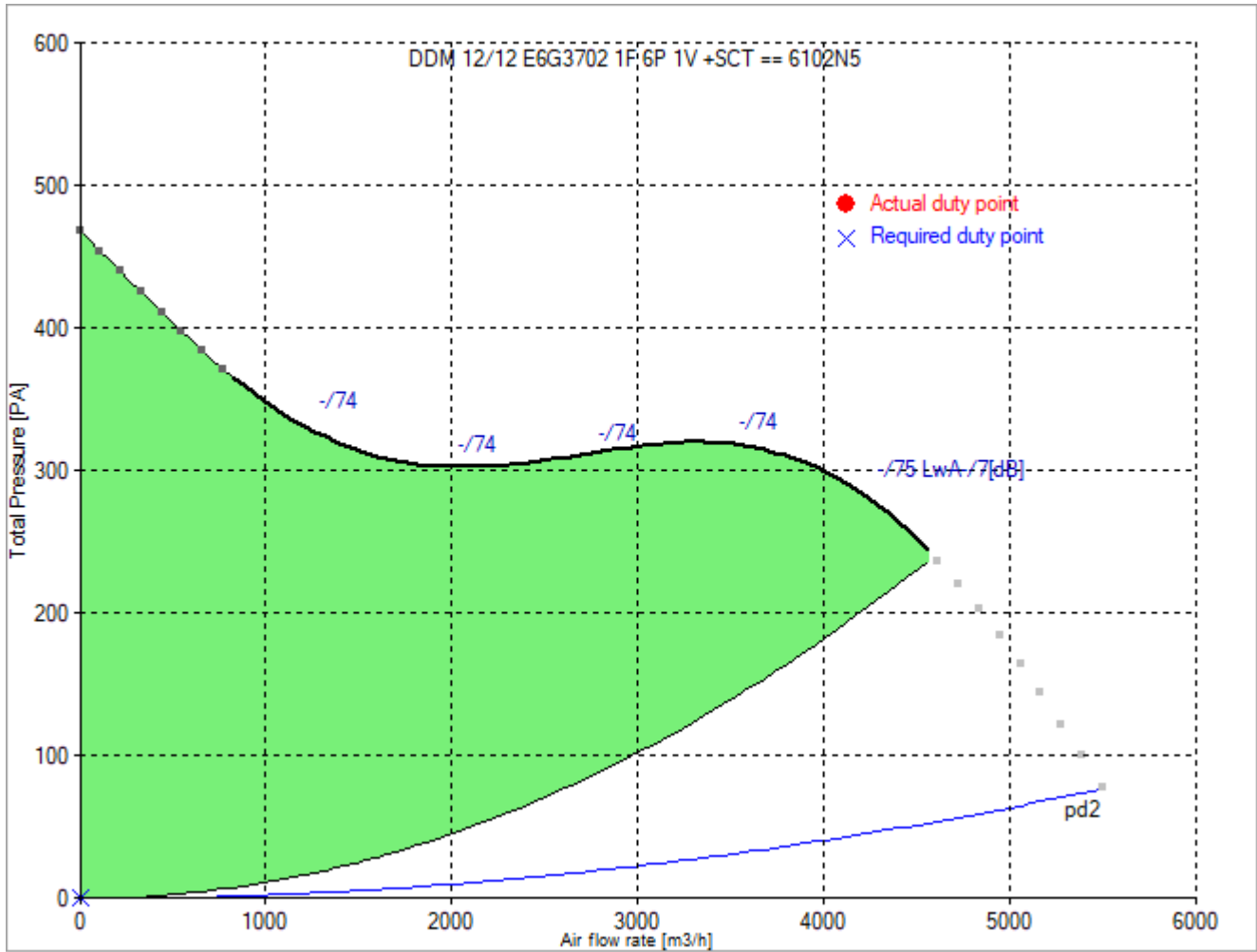
Double width, double inlet (DWDI), direct drive, forward curved blades fan. Lap-jointed scroll made of galvanized steel (EN 10142), assembled through a high-technology roller-locked seaming. Straight cut off plate at fan discharge. Impeller with forward curved blades of galvanised steel plate, directly mounted on a "External Rotor" motor for no transmission losses. Closed (IP 55) frame, single-phase, voltage controllable motor, usable at 230 V, 50 Hz. Built-in thermal protection device available as option. Maintenance free, integral vibration isolators, self aligning ball bearings. Dynamically balanced according to ISO 1940. With mounted terminal box. Air performance ratings according to AMCA 210-99 (Fig. 12), UNI 10531 (Fig 30c and par. 29.2 f) and ISO 5801 (Fig. 69 c and par. 30.2 f)

Technical data of the fan: DDM 12/12 E6G3702 1F 6P 1V +SCT == 6102N5

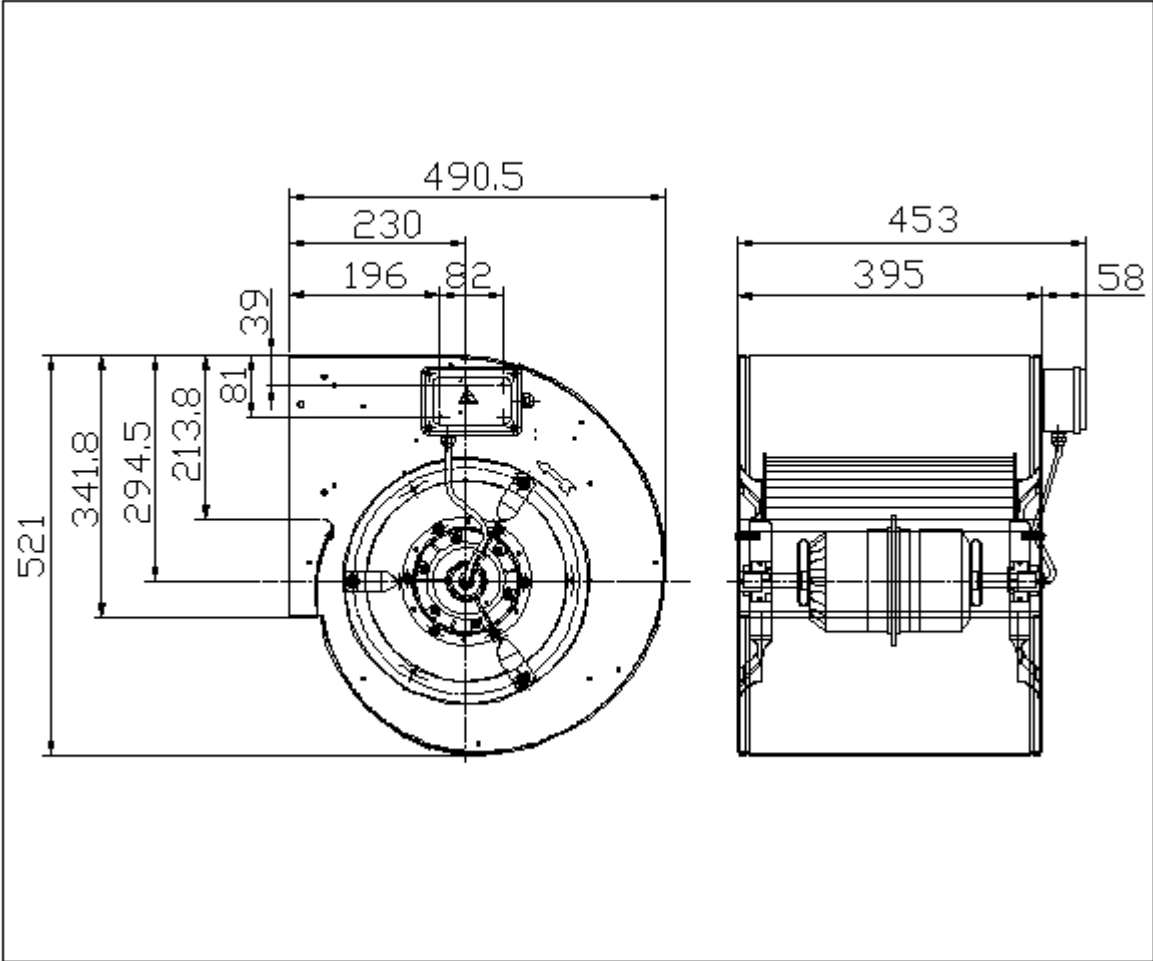
fulfills the ErP-directive 2013

Description	Value Dimension
<b>Specified duty point</b>	
Air flow rate (V)	- m <sup>3</sup> /h
Total pressure rise	- Pa
<b>Actual duty point</b>	
Installation acc. DIN 24163 Part 1	B
Reference density (Rho1)	1.20 kg/m <sup>3</sup>
Medium temperature (t)	20 C
Air flow rate (V)	- m <sup>3</sup> /h
Total pressure rise (dp <sub>t</sub> )	- Pa
Dynamic pressure at discharge (pd <sub>2</sub> )	- Pa
Static pressure increase (dp <sub>ra</sub> )	- Pa
fan speed (n <sub>v</sub> )	- min <sup>-1</sup>
Absorbed power (P <sub>1</sub> )	- kW
Current (I)	- A
Total system efficiency (ETA <sub>ts</sub> )	- %
Static system efficiency (ETA <sub>raS</sub> )	- %
Specific Fan Power (SFP-factor)	- W/(m <sup>3</sup> /s)
Nozzle calibration factor (K <sub>10</sub> )	- m <sup>2</sup> /s/h
Differential pressure on nozzle (dp <sub>D</sub> )	- Pa
Velocity at discharge area (c)	- m/s
Fan weight	36 kg
A-weighted sound power level discharge/intake LwA <sub>,7</sub>	- dB
<b>Rated data</b>	
Phase-Voltage-Frequency	1~230-50 V-Hz
Number of poles:	6
Motor rating (P <sub>N</sub> )	0.515 kW
Max. absorbed power (P <sub>1max</sub> )	1.105 kW
Rated motor speed (n <sub>N</sub> )	830 min <sup>-1</sup>
Rated motor current (I <sub>N</sub> )	5,0 A
Capacitor (C)	20 µF
Temperature range of conveying medium (t <sub>min</sub> ...t <sub>max</sub> )	-20...40 C
<b>ErP - Data at optimum efficiency and density 1.20 kg/m<sup>3</sup></b>	
measurement- / efficiency category	B / total
design status of VSD	without VSD
overall efficiency (ETA <sub>opt</sub> )	38.2 %
achieved efficiency grade (N <sub>ist</sub> )	45.0
required efficiency grade in 2013 / 2015 (N)	42 / 49
Air flow rate (V <sub>opt</sub> )	3613 m <sup>3</sup> /h
pressure rise (dp <sub>opt</sub> )	316 Pa
Fan speed (n <sub>vopt</sub> )	868 min <sup>-1</sup>
motor power input (P <sub>1opt</sub> )	0.83 kW
specific ratio (d <sub>dpopt</sub> )	1.003

Fan curve to DDM 12/12 E6G3702 1F 6P 1V +SCT == 6102N5



Dimensions to DDM 12/12 E6G3702 1F 6P 1V +SCT == 6102N5



Rotation: RD

Handing: 90